



# Kāheea

*Newsletter of the Mayor's Office of Culture and the Arts*

**Mai kolohe I ka mo'o o lele I ka pali.** *(Do not bother lizards or you'll fall off the cliff.)*

**Exhibits** at Honolulu Hale, 530 S King St, 8:00 am - 4:30 pm

## The Grandeur of Brush Painting

April 19 - 28, Courtyard

Original brush paintings by the members  
of the Sumie Society of Hawai'i.

*Sumie images are from previous exhibits*



## Water Conservation Week Art & Poetry Contest

April 25 - May 19

Winning artwork and poems  
created by local students for the  
**Board of Water Supply's**  
annual contest.

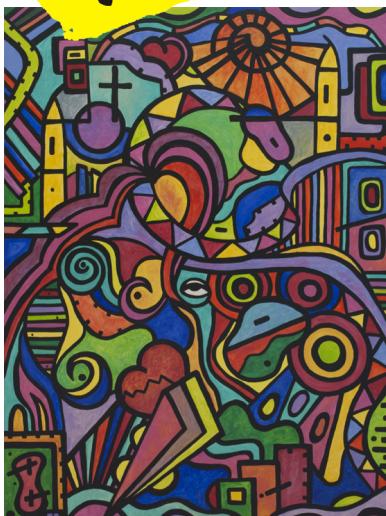


*The Association of Hawaii Artists presents*

**aha**

## The 46th Annual Aloha Show

March 22 - April 14, Courtyard



# Hawai'i Book & Music Festival

## A Celebration of Story and Song

April 30 - May 1, 10 am - 5 pm

Frank F. Fasi Civic Center Grounds

### Featuring

- Local & National Best Sellers • Author Signings • Book Sellers and Publishers
- Merrie Monarch Winners • Ken Makuakane • Jeff Peterson • Walt Keale
- Kawika Kahiapo • Singer-Songwriter Competition • Jam in the 'Ukulele Kanikapila
- For the keiki: Mr. Steve; Musicals & Drama; Children Entertainers & Storytellers
- Great Food! • MUCH, MUCH MORE!

For more information visit <http://www.hawaiiibookandmusicfestival.org>

*Mission Memorial Auditorium* 550 S King St

## Community Dialogue on Civic Engagement with Angela Davis and John Waihee

Wednesday, April 13, 6:00 pm

Renowned American political activist, scholar and author Angela Davis has been selected as the spring 2016 Dan and Maggie Inouye Distinguished Chair in Democratic Ideals at the University of Hawai'i at Mānoa.

Along with former Hawai'i Governor John Waihee, Ms. Davis will offer her insights on democratic ideals and civic engagement.

For more information visit <http://manoa.hawaii.edu/inouyechair/>

## Kūhiō Beach Hula Show

6:30 - 7:30 pm at the Kūhiō Beach Hula Mound, near the Duke Kahanamoku statue, beachside at Uluniu & Kalākaua Avenue in Waikīkī, weather-permitting. Outdoors, casual. Seating on the grass; beach chairs, mats, etc. okay. Cameras are welcome.

### Tuesdays

Ainsley Halemanu and  
Hula Hālau Ka Liko O Ka Palai

### Thursdays

Joan "Aunty Pudgie" Young  
and Puamelia

### Saturdays

~Apr 2 Joan "Aunty Pudgie" Young  
and Puamelia

~Apr 9 Coline Aiu and  
Hālau Hula O Maiki

~Apr 16 Sallie Yoza and

Hālau O Napuala'ikauika'iu

~Apr 23 Lilinoe Lindsey and  
Ka Pa Nani O Lilinoe

~Apr 30 Leimomi Ho and  
Keali'ika'apunihonua Ke'ena A'o Hula

*Schedule is subject to change without notice. For more info call 808-843-8002*

## Royal Hawaiian Band

### ~Iolani Palace

Apr 1, 8, 15, 22 & 29, 12 noon

### ~Kapi'olani Bandstand

Apr 3 & 24, 2:00 pm

### ~Ala Moana Centerstage

Apr 6 & 27, 11:00 am

### ~Apr 2, 12:00 pm

### Palikū Arts Festival

Windward Community College

### ~Apr 10, 2:00 pm

Royal Hawaiian Hotel

Coconut Grove

### ~Apr 30, 10:00 am

### Book and Music Festival

Frank F. Fasi Civic Center Grounds

*Schedule is subject to change without notice. For more info call 808-922-5331*